

# Colosseum Mine Trail (updated)

**Date:** November 4, 2017

**Run Leader:** Chris Slaughter, 714 307 4283, jcs\_90621 (at) yahoo.com

**RSVP:** Please. If more than 7 vehicles or 15 persons, we need a permit

**Meeting Time:** Gather 9:00 AM, Leave 9:30 AM

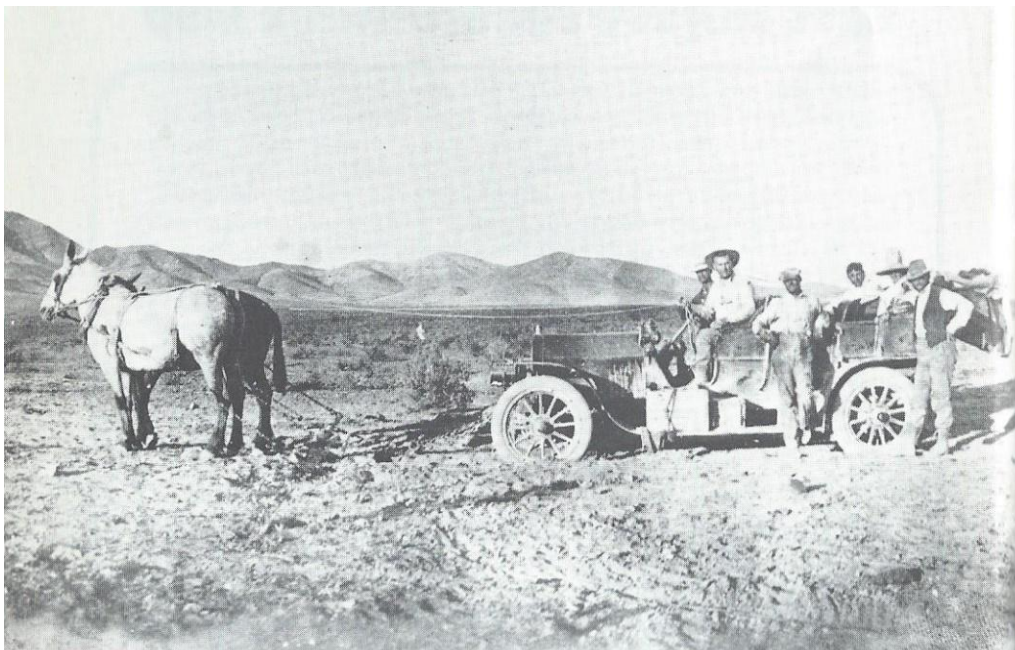
**Meeting Location:** Whiskey Pete's Parking Lot

**Meeting Directions:** 35.611208°, -115.390917°

**Run type:** Day run, approximately 80 miles from Primm to Baker, so no extra fuel required.

**Difficulty Rating:** 2 (1-5) Mostly sand.

**Trail Description:** The Colosseum Mine trail starts at the Yates Well Road. From there we'll head west between two of the large solar collector site, then to Green's Cabin and Colosseum Mine. Next to Mammoth Mine and hopefully see some beautiful copper ore rocks. After that we'll proceed to the Dinosaur Trackway ACEC to see the only fossilized dinosaur tracks in California. Plan to be done about 3PM.



Widespread use of the automobile came early to the East Mojave. However, it has always been advisable to go fully prepared for any emergency.

**Equipment Required: Standard equipment set, no special equipment required**

**Permits Required: If more than 7 vehicles or 15 persons, we need a permit.**

**Communications: CB Channel 4. HAM channel 146.580 MHz (DD-1)**

**Reminder to Bring: Bring food for lunch, extra water, chairs, basic tools, shovel, camera, extra weather appropriate clothing, etc.**

**Campground information: I am spending Friday night at Whiskey Pete's in Primm, be home Saturday.**